

2012 Labor Day Parade

September 3rd

Line-up time 8 am • Parade starts at 9 am

**We Invite all CWA Members and Family to walk with us
in the Labor Day Parade, Downtown St. Louis**

**WE ARE
THE 99%
VOTE**

**This year's theme is
"We are the 99% vote"**

The first 200 participants will receive a free t-shirt.

*Greater St. Louis CWA Council will provide
hot dogs and refreshments after the parade
on 14th Street between Market and Chestnut.*

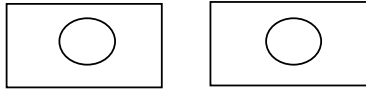
Volunteers needed!

Please contact Jim Kolve at 314.991.0200 ext. 246 or jkolve@cwa6300.org

See other side for line-up location information

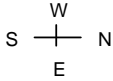
Visit www.cwa6300.org for more information

2012 Labor Day Parade Line-up Map



LABOR DAY PARADE

Monday, September 3, 2012
 Line-up: 7:00 a.m. ~ **Start: 9:00 a.m.**
 Line-up on Olive between Jefferson & 15th Street (Plus some side streets)
 Route: East on Olive @ 15th to Tucker, South on Tucker to Market, West on Market to 15th to adjourn.

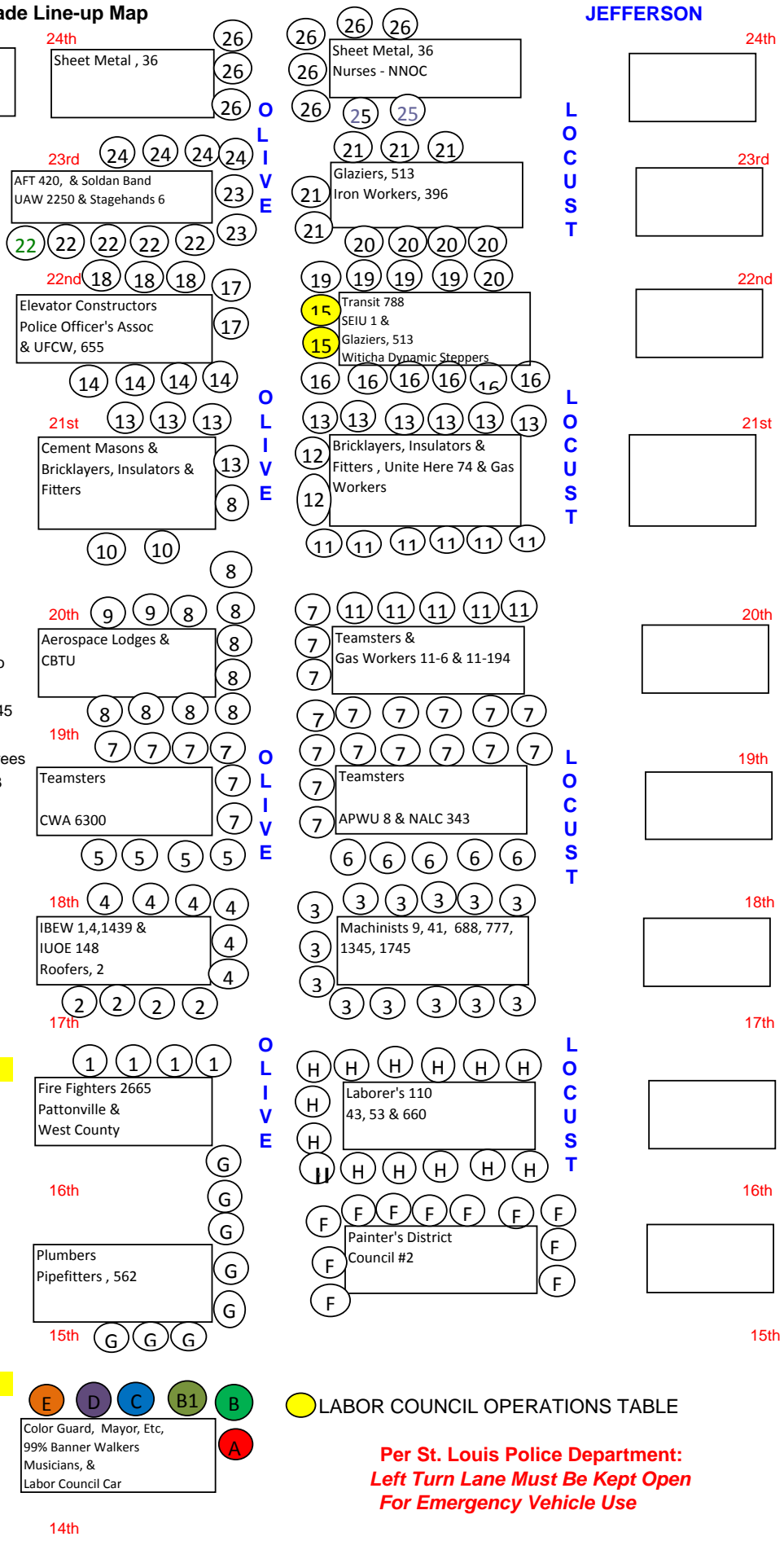


- A. Color Guard
- B. Mayor, Police Chief, Fire Chief
- B1 Clergy
- C. "We Are the 99% Vote" Banner Team
- D. Musicians Horse Drawn Carriage
- E. St. Louis Labor Council "Car" 125-A
- F. Painters District Council #2 125-A
- G. Plumbers & Pipefitters, #562 100-A
- H. Laborer's #660 75-A & 42,53 & 110
- 1. Fire Fighters, 2665 Pattonville/West Co
- 2. Roofers, 2
- 3. Machinists 9, 41, 688, 777, 1345 & 1745
- 4. IBEW, 1, 4, 1439 & IUOE, 148
- 5. CWA, 6300, City Council, 6355 & Retirees
- 6. APWU St. Louis Gateway & NALC 343 & GCC/IBT, 6-505M
- 8. Aerospace Lodge 837, 837A, 837B, 387 & 738
- 9. Coalition of Black Trade Unionists
- 10. Cement Masons
- 11. Gas Workers, 11-6 & USW 11-194
- 12. Unite Here, 74
- 13. Bricklayers 1, Insulators 1 & Sprinkler Fitters 268
- 14. UFCW, 655
- 15. Wichita Dynamic Steppers
- 16. Transit Union, 788
- 17. Elevator Constructors, 3
- 18. St. Louis Police Officer's Association
- 19. SEIU, 1 MO Division
- 20. Glaziers, 513
- 21. Iron Workers, 396
- 22. AFT, 420 & Soldan Marching Band
- 23. Stagehands, 6
- 24. UAW, 2250
- 25. NNOC (Nurses)
- 26. Sheet Metal Workers, 36

ADDITIONS:

- *1 - Wichita Dynamic Steppers
- *2 - NNOC #25
- *3 - Soldan Marching Band

UPDATE: 08/15/12
 opeiu #13
 7/19/2012



Color Guard, Mayor, Etc,
 99% Banner Walkers
 Musicians, &
 Labor Council Car

● LABOR COUNCIL OPERATIONS TABLE

**Per St. Louis Police Department:
 Left Turn Lane Must Be Kept Open
 For Emergency Vehicle Use**